



A Division of Falmouth Scientific, Inc.

HMS-1400 Sidescan Sonar Imagery



 A Division of Falmouth Scientific, Inc.



GeoDAS

File Survey View Data Window Navigation Mosaic Tools Help

Date: **2010/02/27** Snt Lon: **157:53:38.9 W** Veh Depth: **2.8 m** Heading: **326.0** Course: **326.0** Pitch: **0.10** Roll: **-0.40**

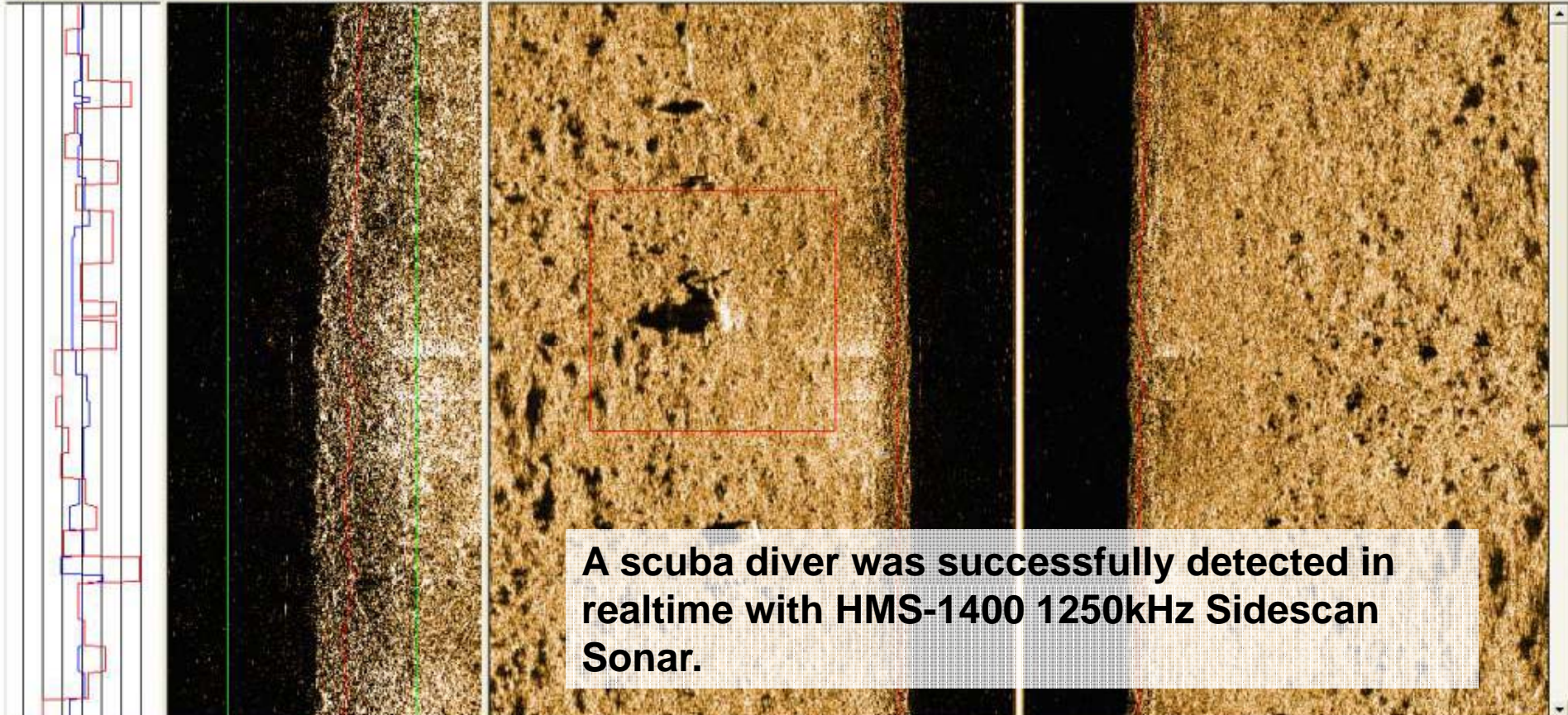
Time: **19:46:38** Snt Lat: **21:19:4.2 N** Altitude: **5.2 m**

Disk: **94.4%** Spd: **0.70 m/s** Wtr Depth: **0.0 m**

LFSS Raw Profile/Bottom Tracking: Intensity vs Range

Pitch: 10.0 Roll: 0.0 PORT Alt.(m): 3.63

10.0 0.0 10.0 1.3 2.2 3.2 4.1 5.0 15.0 7.5 100% 0.0 7.5 100% 15.0 F



A scuba diver was successfully detected in realtime with HMS-1400 1250kHz Sidescan Sonar.

Playback Controls

Gain: Sidescan LUT

Input vs. Output

256.0 128.0 0.0 0 531 1062

Create Off Revert Load Save

Continuous FIR: 0.250 Rf(s):

Side PORT

Eqz: OFF

DEF LUT AVG TVG SNR SBC

HMS HEGG MARINE SOLUTIONS

51.0%

Total Files: 0

OCEANIC IMAGING Consultants

FSI A Division of Falmouth Scientific, Inc.



FSI A Division of Falmouth Scientific, Inc.



n - CleanSweep 3.4.25489

Waterfall

Cursor (General Edit) Display

Data Files

- Track00 (6 files)
- Track01 (1 file)
- Track02 (6 files)
- Track03 (5 files)
- Track04 (5 files)
- Track05 (2 files)
- Track06 (4 files)

Swaths

- Track06_autoswath05
- Track06_autoswath04
- Track06_autoswath03
- Track06_autoswath02
- Track06_autoswath01

Time Selector

Cursor Auto Line width 0 hour 15 min

Track00

KeelhiTarget K: KeelhiTarget: Kee KeelhiTargets- Keelhi

Track02

1200_Pass1.02.2 120 120 1 1 126 4 12 12

Coverage Map

Options Refresh

Zoom

Sidescan 100%

Track00_autoswath02

Track00_autoswath03 Track00_autoswath04

Track00_autoswath00

Contact - Diver_03

Contact - Diver_05

Rev. Gold Regen Pixel Scale 0.013m

1.30 meters

1.30 meters

The screenshot displays the CleanSweep software interface. At the top, the title bar reads 'n - CleanSweep 3.4.25489'. The main window is titled 'Waterfall' and shows a large, textured orange-brown image representing a sonar sweep. A green cursor is visible in the upper left of this view. To the right of the waterfall view, there is a vertical plot with blue and green lines. Below the waterfall view, a semi-transparent text box contains the text: 'Multiple target view in CleanSweep post-processing software.' On the left side, there is a 'Data Files' tree view listing tracks (Track00 to Track06) and swaths (Track06_autoswath01 to Track06_autoswath05). Below that is a 'Time Selector' panel with a 'Cursor' dropdown, 'Auto' checkbox, and 'Line width' controls. The 'Track00' section shows a 'KeelhiTarget' and a track visualization. The 'Track02' section shows a 'Viewport' and track visualization. At the bottom left is a 'Coverage Map' showing a satellite-style map with colored overlays representing the survey tracks. At the bottom right are two 'Contact' detail views, 'Contact - Diver_03' and 'Contact - Diver_05', each showing a zoomed-in view of a target with a green line and a scale bar of '1.30 meters'. A 'Pixel Scale' of '0.013m' is also indicated.

Multiple target view in CleanSweep post-processing software.



FSI A Division of Falmouth Scientific, Inc.

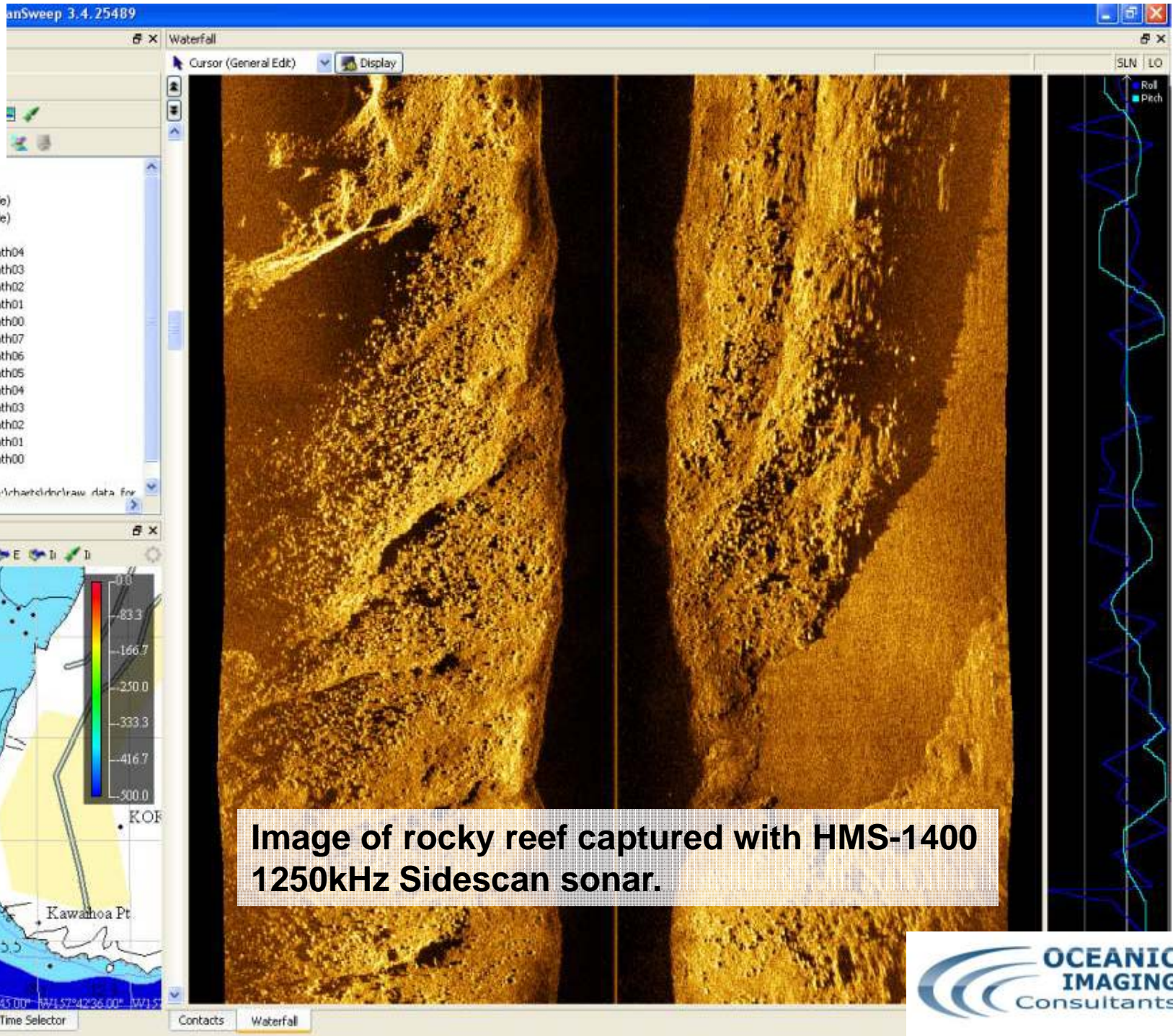
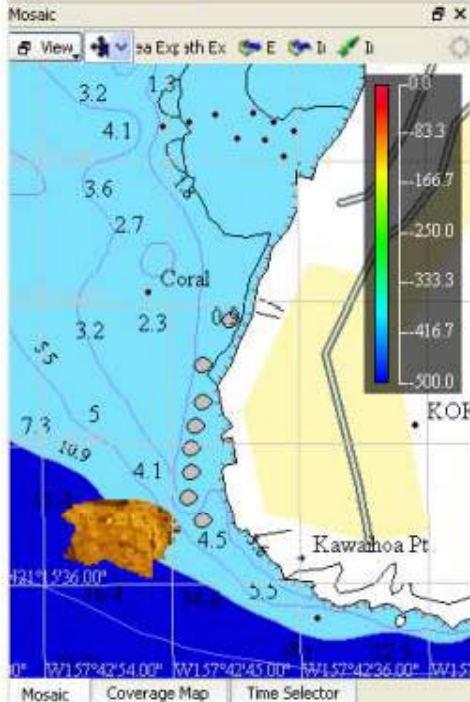
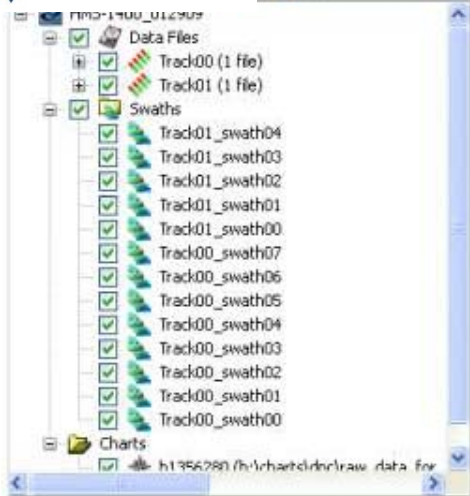


Image of rocky reef captured with HMS-1400 1250kHz Sidescan sonar.





A sunken container found nearby Honolulu shipping channel.

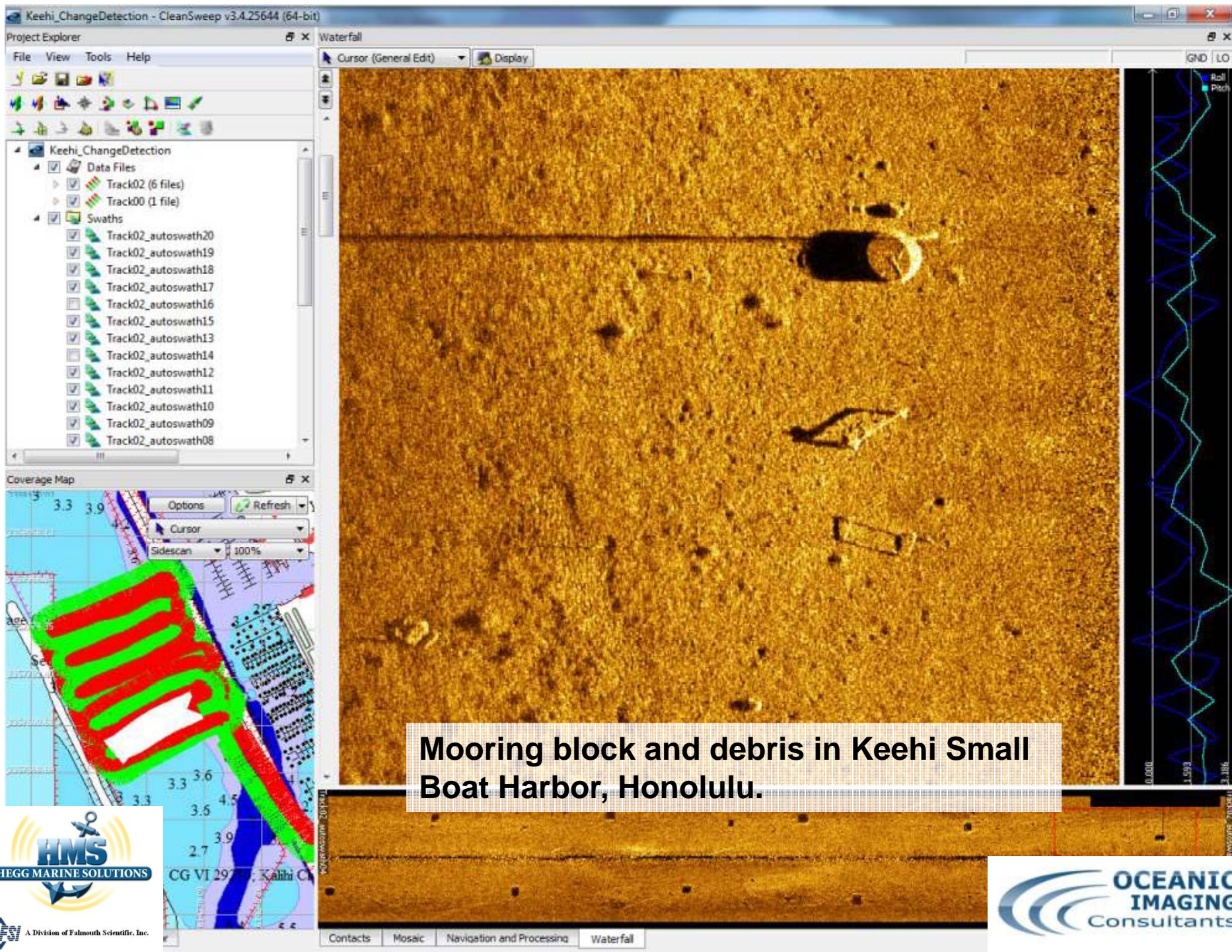




Bridge bases under Sand Island Access Road, Honolulu.

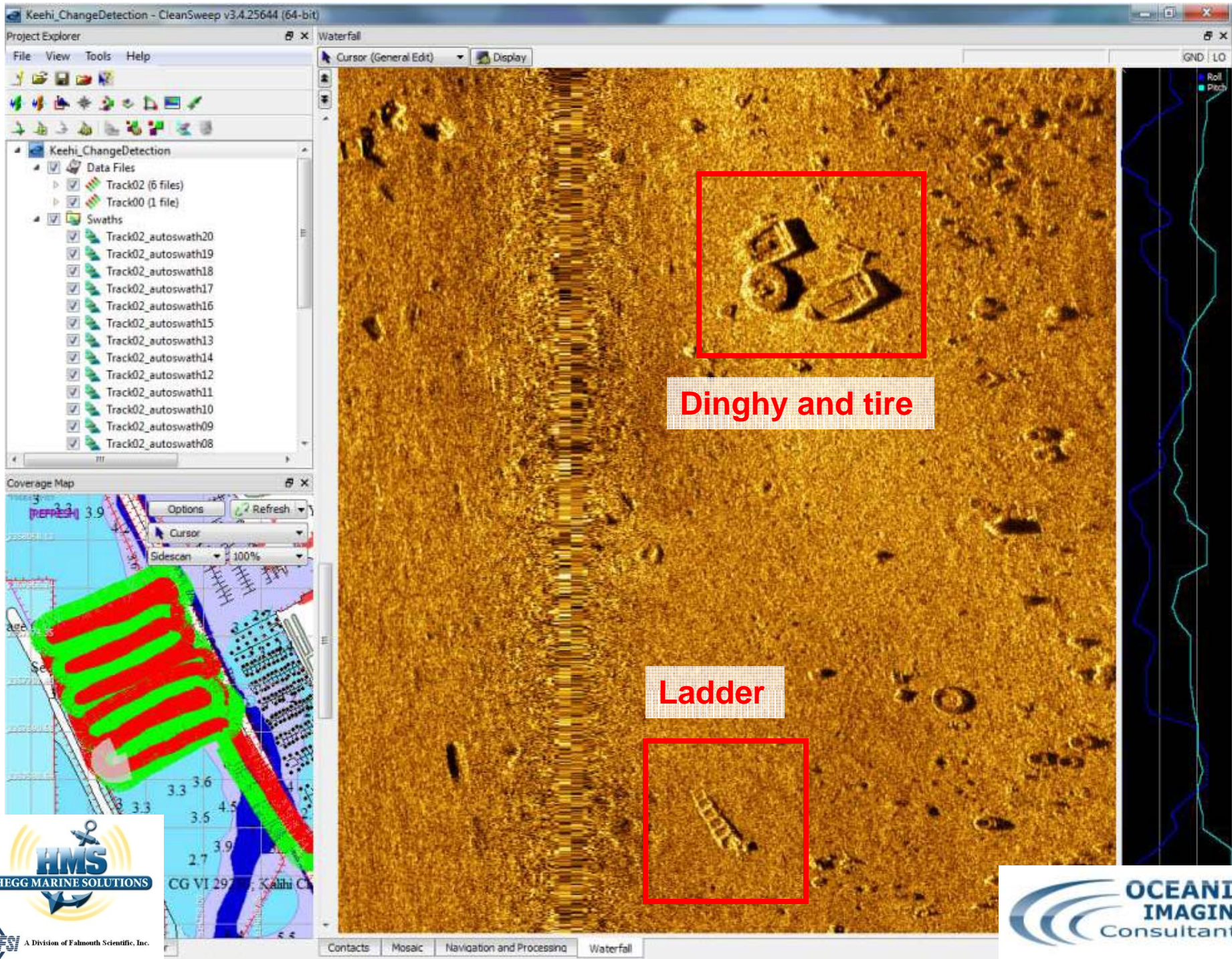






Mooring block and debris in Keelhi Small Boat Harbor, Honolulu.

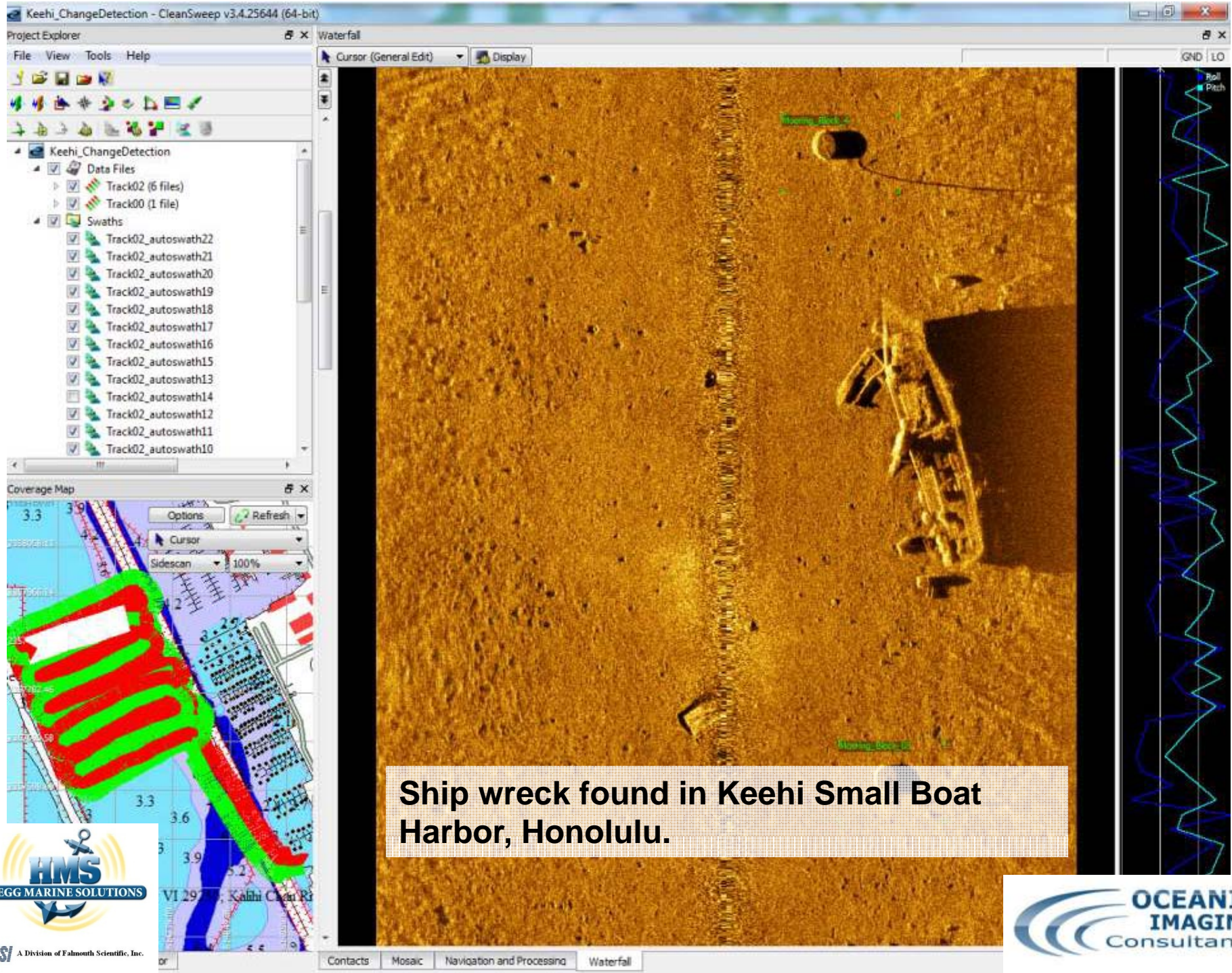




Dinghy and tire

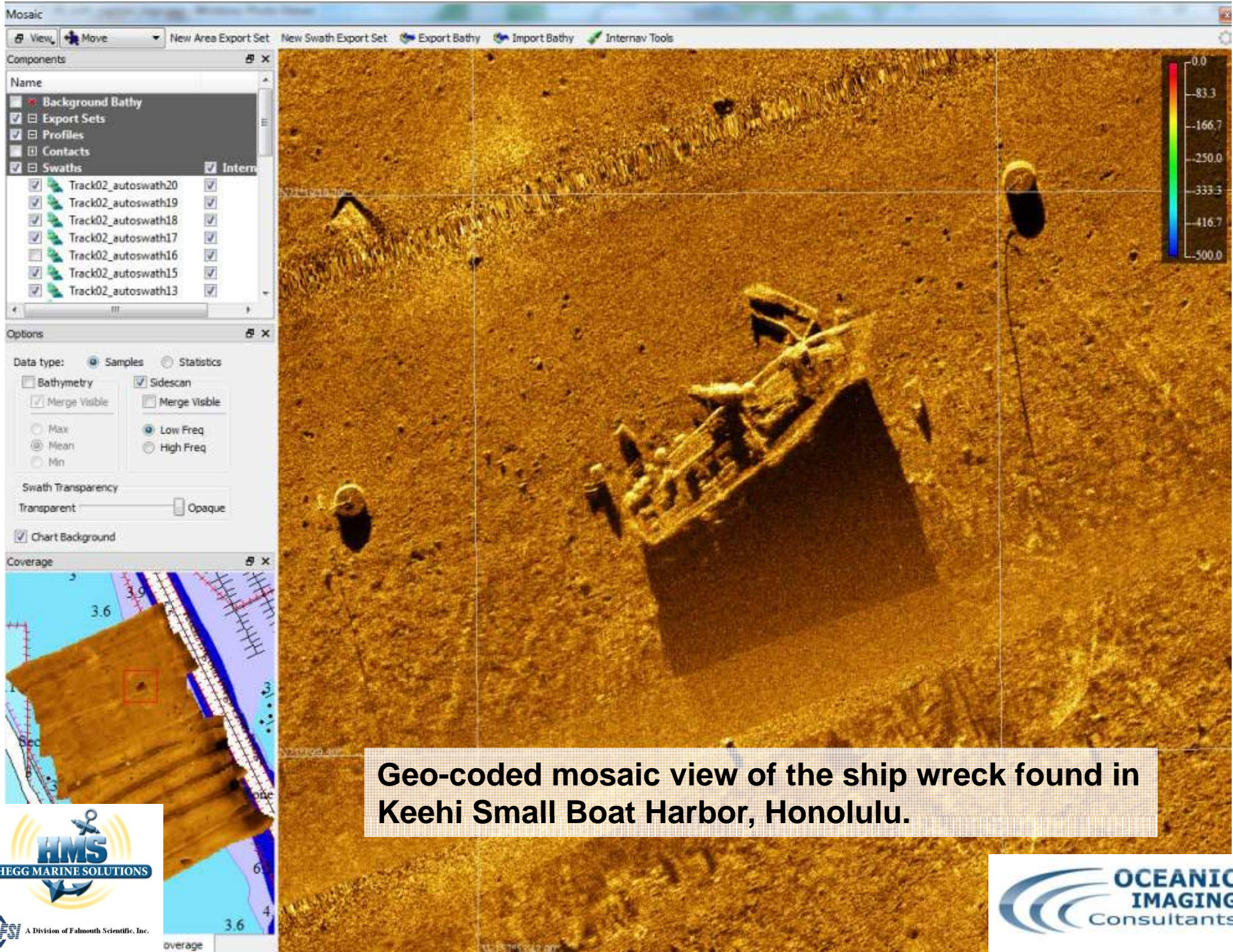
Ladder





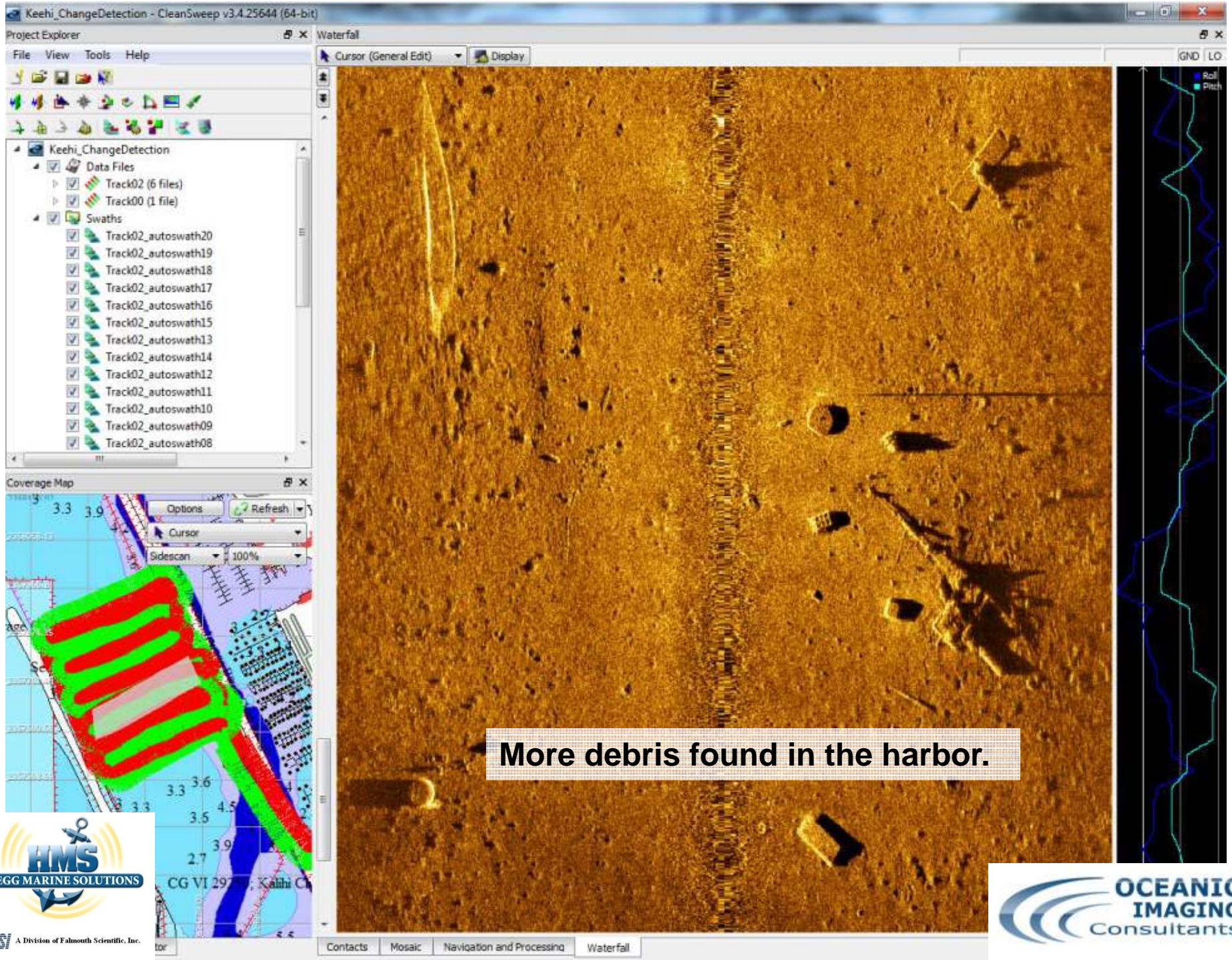
Ship wreck found in Keelhi Small Boat Harbor, Honolulu.





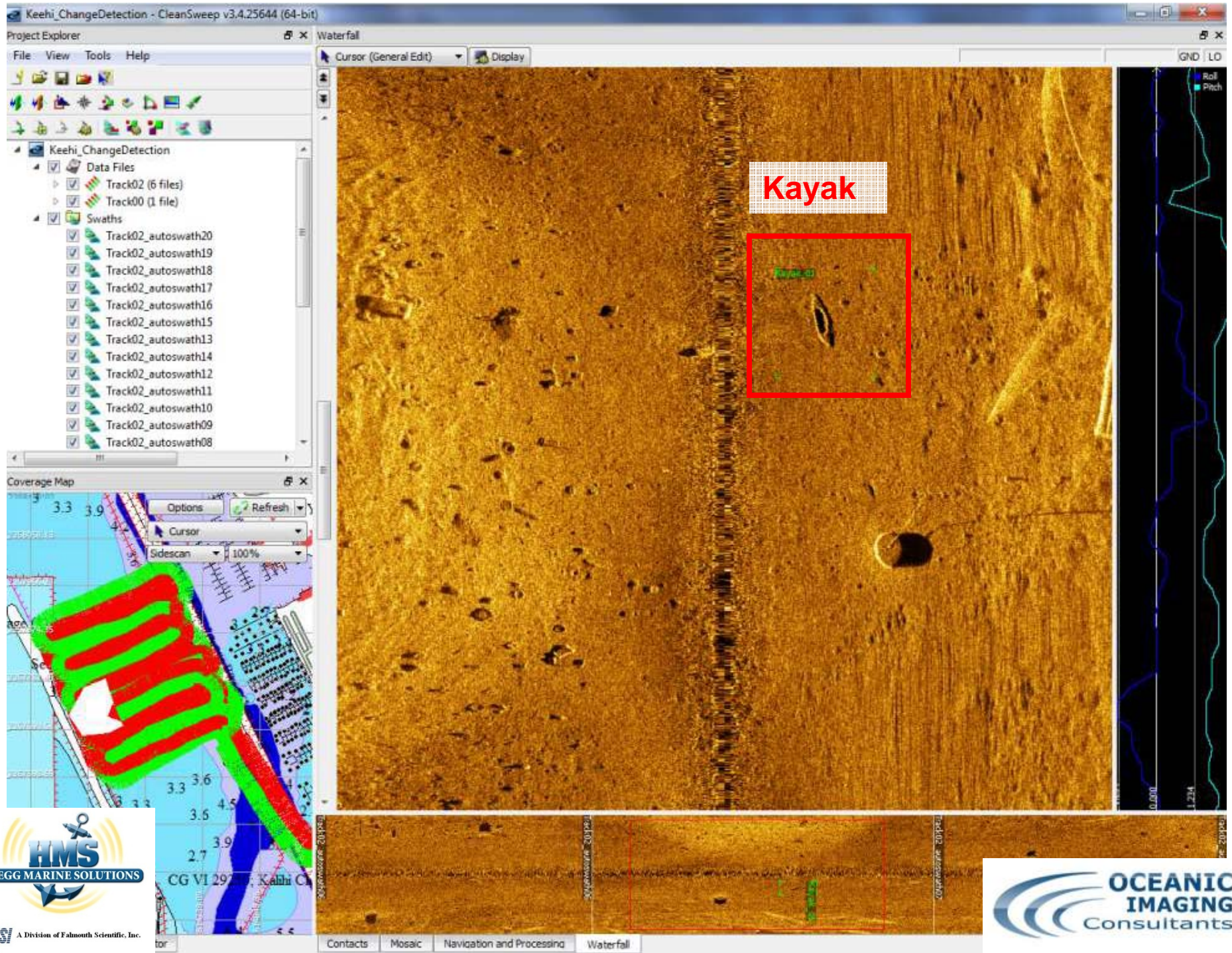
Geo-coded mosaic view of the ship wreck found in Keehi Small Boat Harbor, Honolulu.





More debris found in the harbor.





Keelhi_ChangeDetection - CleanSweep v3.4.25644 (64-bit)

Project Explorer

- File View Tools Help
- Keelhi_ChangeDetection
 - Data Files
 - Track02 (6 files)
 - Track00 (1 file)
 - Swaths
 - Track02_autoswath22
 - Track02_autoswath21
 - Track02_autoswath20
 - Track02_autoswath19
 - Track02_autoswath18
 - Track02_autoswath17
 - Track02_autoswath16
 - Track02_autoswath15
 - Track02_autoswath13
 - Track02_autoswath14
 - Track02_autoswath12
 - Track02_autoswath11
 - Track02_autoswath10

Coverage Map

Options Refresh

Cursor

Sidescan 100%

VI 297, Kalih Chain Pt

Contacts

Rev. Gold Regen

Pixel Scale 0.011m

Contact - Ladder_01

Ladder

1.10 meters

Category	NONE			
Contact	Xi	614543.728m	Yi	2357646.157m
Center	Lon:	W 157°53'44.03"	Lat:	N 21°19'1.63"
Size	W:	0.661m	L:	1.654m
Shadow	H:	0.146m	L:	0.193m
Comments	Edit			

Contact - Kayak_01

Kayak

1.10 meters

Category	NONE			
Contact	Xi	614514.231m	Yi	2357725.376m
Center	Lon:	W 157°53'45.04"	Lat:	N 21°19'4.21"
Size	W:	0.758m	L:	3.131m
Shadow	H:	0.133m	L:	0.261m
Comments	Edit			

Uncategorized Contacts

- Categories:
 - Uncategorized
 - Buoys
 - Shipwreck
 - Hazards
- Mooring... Mooring... Mooring... Mooring... Ladder_01 Ladder_02 Kayak_01 Block_01 cage_01 tire_01
- boat_01 tire_02 mooring... ladder_03 tire_05 Mooring... Mooring...
- cage_03 cage_04 Mooring... target_02 dinghy t... ladder_04

Contacts Mosaic Navigation and Processing Waterfall



Keehi_ChangeDetection - CleanSweep v3.4.25644 (64-bit)

Project Explorer

File View Tools Help

Keihi_ChangeDetection

- Data Files
 - Track02 (6 files)
 - S150.00.2009.282.194616.oic
 - S150.00.2009.282.200117.oic
 - S150.00.2009.282.201618.oic
 - S150.00.2009.282.203119.oic
 - S150.00.2009.282.204620.oic
 - S150.00.2009.282.210121.oic
 - Track00 (1 file)
 - S150.00.2009.283.012950.oic
- Swaths
 - Track02_autoswath22
 - Track02_autoswath21
 - Track02_autoswath20
 - Track02_autoswath19
 - Track02_autoswath18
 - Track02_autoswath17

Time Selector

Cursor Auto Line width 0 hour 15 min

Viewport

S150.00.2009.282.194616.oic (2009/10/09 19:46'16"2690

Track02_auto Track02_autos Track02

S150.00.2009.282.200117.oic (2009/10/09 20:01'17"0130

Track02 Track02 Track02 Track02 Track02

S150.00.2009.282.201618.oic (2009/10/09 20:16'18"0230

Track02 Track02 Track02 Track02 Track02

S150.00.2009.282.203119.oic (2009/10/09 20:31'19"0320

Track02 Track02 Track02 Track02

S150.00.2009.283.012950.oic (2009/10/09 20:46'20"0130

Track02_autoswat

2950.oic (2009/10/10

Contacts

Rev. Gold Regen Pixel Scale 0.012m

Contact - tire_05

Tire

1.20 meters

Category	None
Contact	Xi: 614651.754m Yi: 2357826.500m
Center	Lon: W157°53'40.24" Lat: N21°19'7.47"
Size	W: 1.063m L: 1.204m
Shadow	H: 0.214m Lt: 0.894m
Comments	
Edt	

Contact - Mooring_Block_4

Mooring Block

1.20 meters

Category	None
Contact	Xi: 614627.445m Yi: 2357910.829m
Center	Lon: W157°53'41.06" Lat: N21°19'10.22"
Size	W: 1.274m L: 1.509m
Shadow	H: 0.776m Lt: 2.210m
Comments	
Edt	

Add Category

Categories

- Uncategorized
- Buoys
- Shipwreck
- Hazards

Uncategorized Contacts

Mooring... Mooring... Mooring... Mooring... Ladder_01 Ladder_02 Kayak_01 Block_01 cage_01 tire_01

boat_01 tire_02 mooring... ladder_03 tire_05 Mooring... Mooring...

cage_03 cage_04 Mooring... target_02 dinahy t... ladder_04

Contacts Mosaic Navigation and Processing Waterfall



Keelhi_ChangeDetection - CleanSweep v3.4.25644 (64-bit)

Project Explorer

File View Tools Help

Keelhi_ChangeDetection

- Data Files
 - Track02 (6 files)
 - S150.00.2009.282.194616.oic
 - S150.00.2009.282.200117.oic
 - S150.00.2009.282.201618.oic
 - S150.00.2009.282.203119.oic
 - S150.00.2009.282.204620.oic
 - S150.00.2009.282.210121.oic
 - Track00 (1 file)
 - S150.00.2009.283.012950.oic
- Swaths
 - Track02_autoswath22
 - Track02_autoswath21
 - Track02_autoswath20
 - Track02_autoswath19
 - Track02_autoswath18
 - Track02_autoswath17

Time Selector

Cursor Auto Line width 0 hour 15 min

Viewport

S150.00.2009.282.194616.oic (2009/10/09 19:46:16.2690)

Track02_auto Track02_autoswath Track02_autoswath20 Track02_autoswath21

Track02

S150.00.2009.282.200117.oic (2009/10/09 20:01:17.0130)

Track02 Track02 Track02 Track02 Track02

Track02

S150.00.2009.282.201618.oic (2009/10/09 20:16:18.0230)

Track02 Track02 Track02 Track02 Track02

Track02

S150.00.2009.282.203119.oic (2009/10/09 20:31:19.0320)

Track02 Track02 Track02 Track02

Track02

S150.00.2009.282.210121.oic (2009/10/09 20:46:20.0130)

Track02 Track02

S150.00.2009.283.012950.oic (2009/10/09 20:46:20.0130)

Track02_autoswath22

2950.oic (2009/10/09 20:46:20.0130)

Contacts

Rev. Gold Regen Pixel Scale 0.014m

Contact - tire_01

Tire

1.40 meters

Category	NONE			
Contact	Xi	614487.322m	Yi	2357804.526m
Center	Lon	W 157°53'45.95"	Lat	N 21°19'6.79"
Size	W	1.336m	L	1.361m
Shadow	H	0.294m	L	0.913m

Comments

Edit

Contact - boat_01

Dinghy

1.40 meters

Category	NONE			
Contact	Xi	614592.980m	Yi	2357843.932m
Center	Lon	W 157°53'42.27"	Lat	N 21°19'8.05"
Size	W	1.572m	L	4.233m
Shadow	H	0.613m	L	1.330m

Comments

Edit

Add Category

Uncategorized Contacts

Categories

- Uncategorized
- Buoys
- Shipwreck
- Hazards

Mooring... Mooring... Mooring... Mooring... Ladder_01 Ladder_02 Kayak_01 Block_01 cage_01 tire_01

boat_01 tire_02 mooring... ladder_03 tire_05 Mooring... Mooring...

cage_03 cage_04 Mooring... target_02 dinghy... ladder_04

Contacts Mosaic Navigation and Processing Waterfall



Keehi_ChangeDetection - CleanSweep v3.4.25644 (64-bit)

Project Explorer

File View Tools Help

Rev. Gold Regen Pixel Scale 0.012m

Keihi_ChangeDetection

- Data Files
 - Track02 (6 files)
 - S150.00.2009.282.194616.oic
 - S150.00.2009.282.200117.oic
 - S150.00.2009.282.201618.oic
 - S150.00.2009.282.203119.oic
 - S150.00.2009.282.204620.oic
 - S150.00.2009.282.210121.oic
 - Track00 (1 file)
 - S150.00.2009.283.012950.oic
 - Swaths
 - Track02_autoswath22
 - Track02_autoswath21
 - Track02_autoswath20
 - Track02_autoswath19
 - Track02_autoswath18
 - Track02_autoswath17

Time Selector

Cursor Auto Line width 0 hour 15 min

Viewport

S150.00.2009.282.194616.oic (2009/10/09 19:46:16.269)

Track02_auts Track02_autos Track02 Track02

S150.00.2009.282.200117.oic (2009/10/09 20:01:17.013)

Track02 Track02 Track02 Track02 Track02

S150.00.2009.282.201618.oic (2009/10/09 20:16:18.023)

Track02 Track02 Track02 Track02 Track02

S150.00.2009.282.203119.oic (2009/10/09 20:31:19.032)

Track02 Track02 Track02 Track02 Track02

S150.00.2009.283.012950.oic (2009/10/09 20:46:20.013)

Track02_autoswat

2950.oic (2009/10/09 20:46:20.013)

Category NONE

Contact X:	614539.961m	Y:	2357767.239m
Center Lon:	W157°53'44.13"	Lat:	N21°19'5.57"
Size W:	1.257m	L:	1.914m
Shadow H:	0.240m	L:	1.082m

Comments

Edit

Add Category

Categories

- Uncategorized
- Buoys
- Shipwreck
- Hazards

Uncategorized Contacts

Mooring... Mooring... Mooring... Mooring... Ladder_01 Ladder_02 Kayak_01 Block_01 cage_01 tire_01

boat_01 tire_02 mooring... ladder_03 tire_05 Mooring... Mooring...

cage_03 cage_04 Mooring... target_02 dinahy t... ladder_04

Contacts Mosaic Navigation and Processing Waterfall

What's this?

Block



A Division of Falmouth Scientific, Inc.





Data by HMS-1400

Powered by GeoDAS

